



HOW TO RUN A TEST

After you have completed your registration, connect your phone to your detector to start the test.

Please follow these steps:

1. Make sure your phone's Bluetooth is turned ON.
2. Hold the power button on the back of the detector for 3 seconds to power your diamond detector on.
3. Tap **Menu** at the bottom right of your screen.
4. Tap **Connect box**
5. Tap **Scan Device-off**
(It will change to "Scan Devices-on")
6. Tap on the corresponding Yehuda device.
7. Tap the Camera icon. A white light will appear inside your detector once the camera is active.
8. Aim the camera at the object you wish to test, zooming in or out as necessary.
9. Focus by tapping on the screen
10. Tap **Run test**

Congratulations! You have just completed your first test.

To run a new test, tap the orange button located at the bottom left of the screen.

To add more files tap **Continue**, then you can continue to save more results to your cloud.

To log into your cloud account go to Cloud.Yehuda.com

For further information and more detailed instructions, please visit our website for the full manual and instructional videos.

WWW.YEHUDA.COM



CONGRATULATIONS!

on your purchase of a
YEHUDA lab grown diamond detector!



Please visit our website www.yehuda.com and download the **full user manual** for your respective Yehuda detector.

You will also find numerous short instructional videos that will guide you and supply all necessary information needed to operate your detector.

It is **highly recommended** to read the manual and go over the instructional videos. Doing so could prevent any possible user error that may occur such as assuming an incorrect result.

In order to operate your detector, you will first have to download the Yehuda App on your phone.

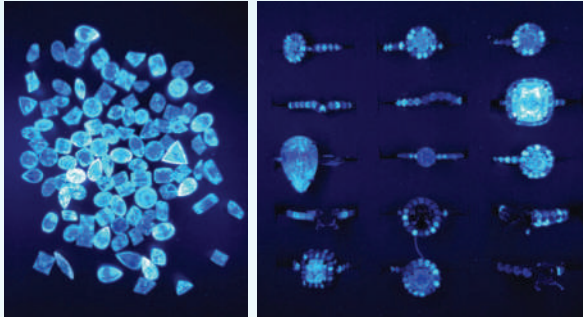


Please scan the QR code or type Yehuda Detect at the App Store or Google Play.

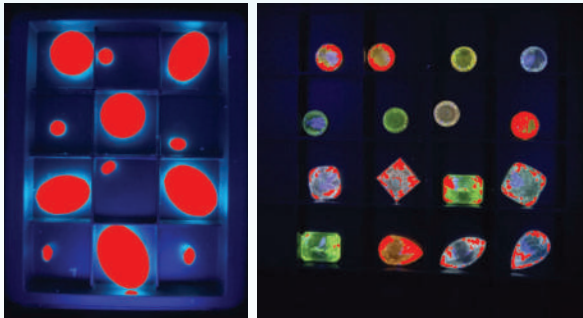
Please follow the instructions and complete the registration process through your Yehuda app.

WWW.YEHUDA.COM

RESULT SAMPLES



ANY diamonds that show an **ONLY BLUE** color in the final result picture is a **NATURAL** diamond.



ANY diamonds that show **ANY OTHER COLOR (NON BLUE)** color in the final result picture is a **LAB GROWN** diamond.

A test is **not final** until you've checked the LUV and GLOWING picture results as well. Not doing so may cause an **INCCORECT** result.

Please read the manual and/or watch the related instructional videos.

SIMULANTS vs DIAMONDS

Simulants will not emit light. They may reflect some color or not be shown at all.

The top row of stones are Moissanite.

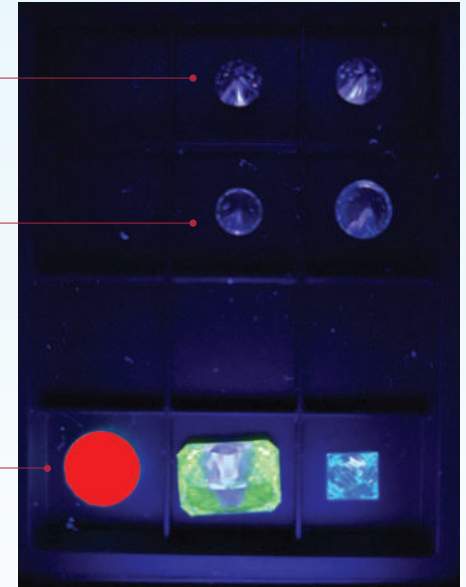
The 2nd row of stones are Cubic Zirconia.

The bottom row of stones are:
(from left to right)

HPHT lab grown diamond.

CVD lab grown diamond.

Natural diamond.



For further information and more detailed instructions, please visit our website for the full manual and instructional videos.

YEHUDA detectors feature a full **ONE YEAR WARRANTY** under normal use. Please see our website for warranty details located in the full user manual, terms and conditions and the privacy policy.