

The YEHUDA Sherlock Holmes 3.0

Quick Guide



About the Legend- Inventor of The Sherlock Holmes detector 3.0



Zvi Yehuda

Mr. Zvi Yehuda is a world-renowned Scientist and Pioneer in the Diamond and Jewelry industry. His inventions have paved the way for generations to come. Here are just a few of his inventions to date:

1965—Laser Drilling of Diamonds. Some diamonds contain an internal black spot imperfection, and by using a laser he was able to drill into the black spot and clean it.

1977—The Yehuda Diamond Colorimeter, a device that examines rough diamonds and predicts their color after polishing. The Colorimeter diagnoses the entire normal scale of the D -K colors.

1982—Yehuda Clarity Enhancement- In the process he invented, a visible inclusion (called a feather) within the diamond is rendered invisible to the naked eye. He found a way to insert a microscopic amount of material that has the same optical properties as a diamond into the inclusion, using a high pressure and high temperature process.

2017-Present—The Sherlock Holmes Synthetic Diamond Detector - a device which detects CVD and HPHT synthetic diamonds in a matter of seconds.

Dear customer,

Please visit www.yehuda.com for the full video manual.

You will find videos for all aspects of the Sherlock Holmes.

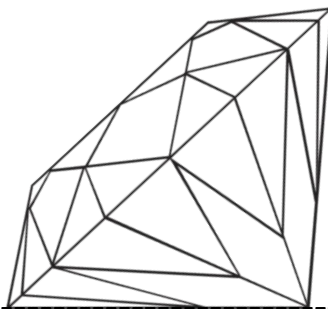
In order to get accurate results from the Sherlock Holmes 3.0- we highly recommend watching all instructional videos.

We are providing you with this booklet, but it cannot replace the video manual that we offer on our website.

Please pay attention:

The diamonds in the pictures you are about to see in the next few pages are positioned with the table facing down. This is done for the photographic purposes.

When testing loose diamonds, please position them on the pavilion as shown in the example drawing below. This is the only way the result will be 100% accurate.



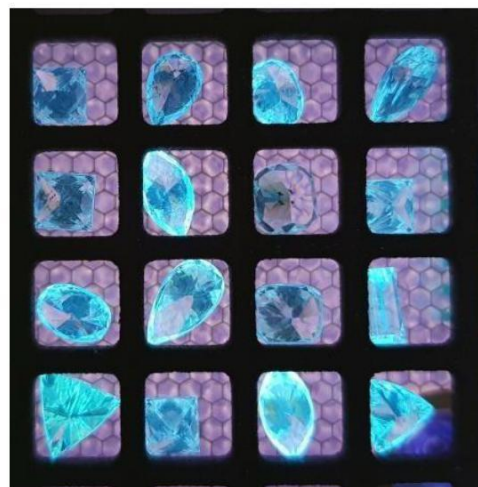
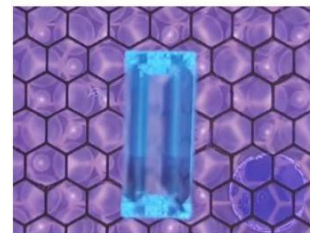
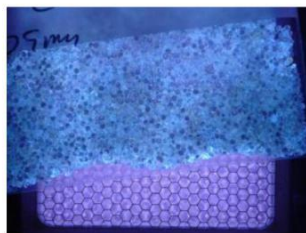
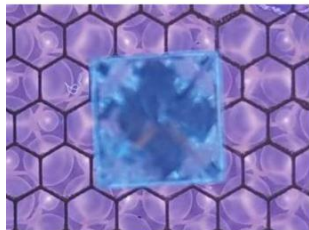
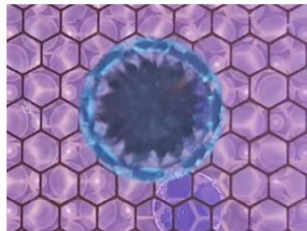
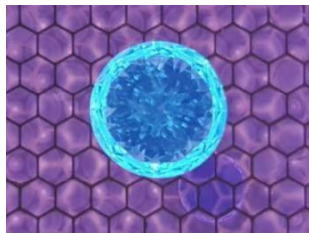
An example of a diamond lying on the pavilion

In order to know if a diamond is natural or lab grown, please follow these rules:

Natural diamonds results:

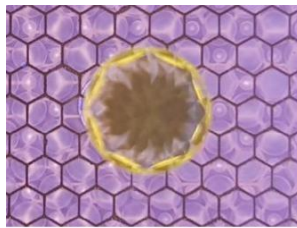
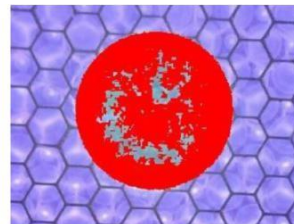
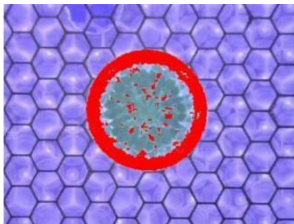
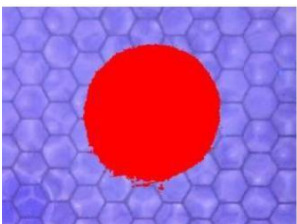
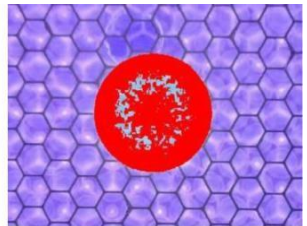
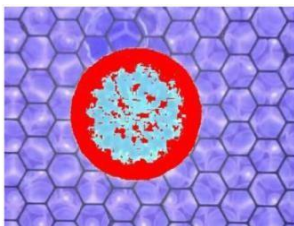
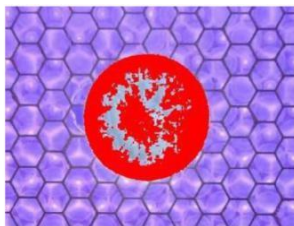
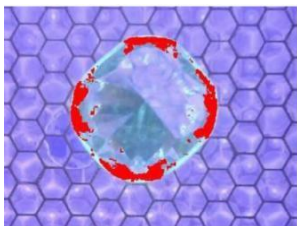
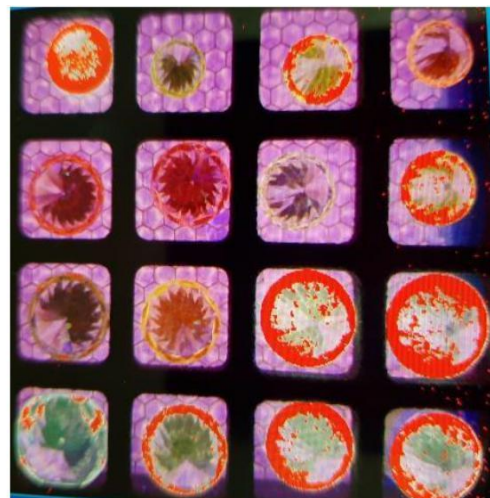
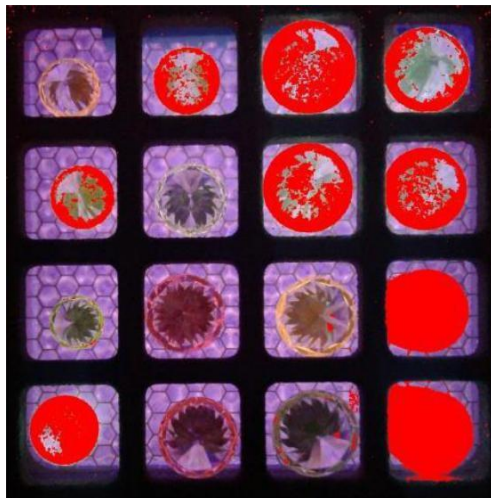
Any diamond that shines ONLY in blue or light blue colors without any red marking is a natural diamond! (Any shade of blue)

All the following are examples of NATURAL DIAMONDS



If the diamond shines in a non-blue color or has (partial or full) red marking– it is a lab grown diamond.

All of the below results indicate that the diamond is a Lab Grown Diamond.



Detecting simulants:

In order to be sure whether a loose stone is a Diamond or a simulant, we **ALWAYS** have to swipe between two result pictures:

“T7 Final Top” and “T6 Final Top & Bottom”

In general- a simulant will not shine or will hardly shine under the Sherlock Holmes lights.

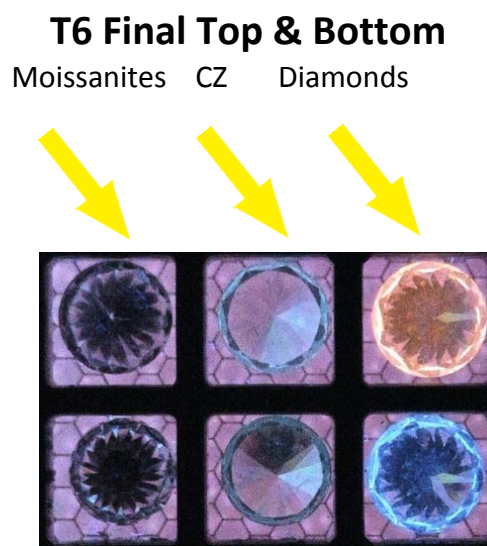
The picture on the left is from the “T7 Final Top” result.

The picture on the right is from the “T6 Final Top & Bottom” result.

You can easily see that the 2 stones on the right side (ORANGE AND BLUE) are diamonds as they vividly shine in both pictures.

The 2 middle stones are CZ – they show a bit of a shine under the “T6 Final Top & Bottom” and do not shine under the “T7 Final Top” .

The 2 stones on the left are MOISSANITES. They show black color with white crown under the “T6 Final Top & Bottom” result and no color at all under the “T7 Final Top” result.



Notice:

The Sherlock Holmes detector provides a convenient and quick method of detecting synthetic diamonds. According to the Assure testing program Sherlock Holmes detects all lab grown diamonds. Inaccurate results may be caused by new technologies by which synthetic diamonds are created, or irregular features in either natural or synthetic diamonds, or other errors. Sherlock Holmes results should be treated as informational only.

The Sherlock Holmes results are provided "as is", with no guarantee of completeness or accuracy. Sherlock Holmes is provided without warranty of any kind, express or implied, including, but not limited to warranties of performance, merchantability and fitness for a particular purpose. In no event will the Company, its related entities, or their respective stockholders, officers, directors, agents or employees be liable to you or anyone else for any decision made or action taken in reliance on the information provided by Sherlock Holmes, or for any consequential, special or similar damages, even if advised of the possibility of such damages.

For further information, please visit: www.yehuda.com



For any technical questions,
Service call during office hours:

New York: +1-212-221-5985
Israel: +972-3-575-1456